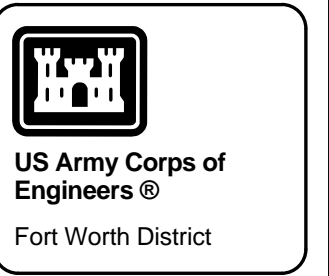
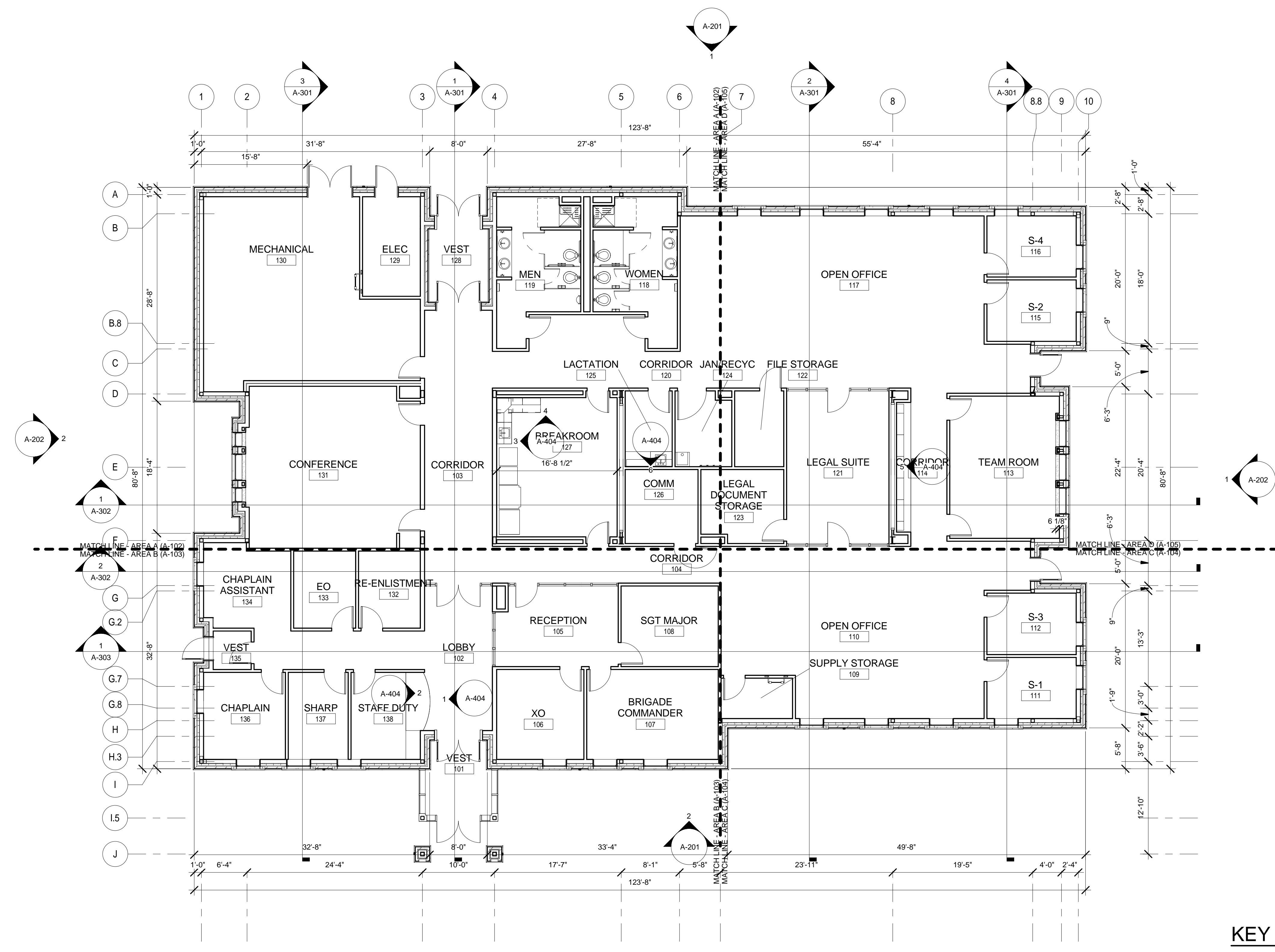


FLOOR PLAN NOTES:

- RE: SHEET A-001 FOR GENERAL NOTES.
- A RECESSED MOUNTED KNOX BOX WILL BE REQUIRED AT THE MAIN ENTRANCE. BOX #3275 DARK BRONZE WITH TAMPER SWITCHES AND #3290 MOUNTING KITS WILL BE REQUIRED. CONTRACTOR NOTIFY INSTALLATION'S FIRE PROTECTION SPECIALIST FOR AN APPLICATION FOR KEYING TO INSTALLATION'S FIRE DEPARTMENT ACCOUNT. RE: SHEET A-002 FOR DETAILS.
- RE: CIVIL PLANS FOR DOWNSPOUT CONNECTIONS TO STORM DRAIN.
- RE: MECH PLANS FOR FLOOR DRAINS AND LOUVER LOCATIONS.
- RE: INTERIORS FOR CORNER GUARD DETAILS AND NOTES.

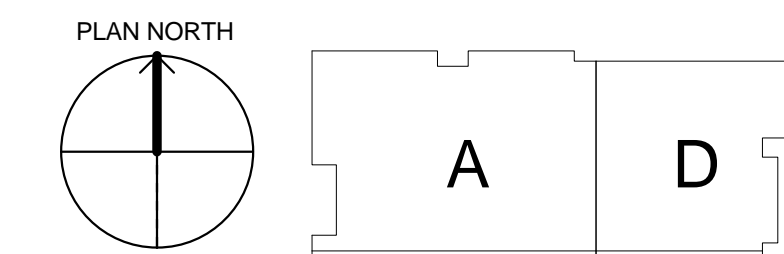


D
C
B
A



1
A-101
FIRST FLOOR PLAN
1/8" = 1'-0"

KEY PLAN



CORRECTED FINAL
NOT FOR CONSTRUCTION

Tracking No.	Description	Symbol	Action	Date

Designed by: S. WEISSENSTEIN A. ELLIS	Date: 31 December 2013	Rev:
Drawn by: S. WEISSENSTEIN	Specification No.:	
Reviewed by: S. WEISSENSTEIN	Contract No.:	
Submitted by: S. WEISSENSTEIN	File Name: PLOT DATE PLOT SCALE	As Indicated

U.S. ARMY ENGINEER DISTRICT,
CORPS OF ENGINEERS
FORT WORTH, TEXAS

ENGINEERING/
CONSTRUCTION DIVISION
ENGINEERING BRANCH

AIT BRIGADE HEADQUARTERS
REGIONAL ENERGY MODEL
REGION 4A

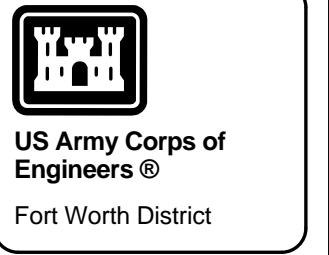
FIRST FLOOR PLAN

SHEET
SEQUENCE
NUMBER

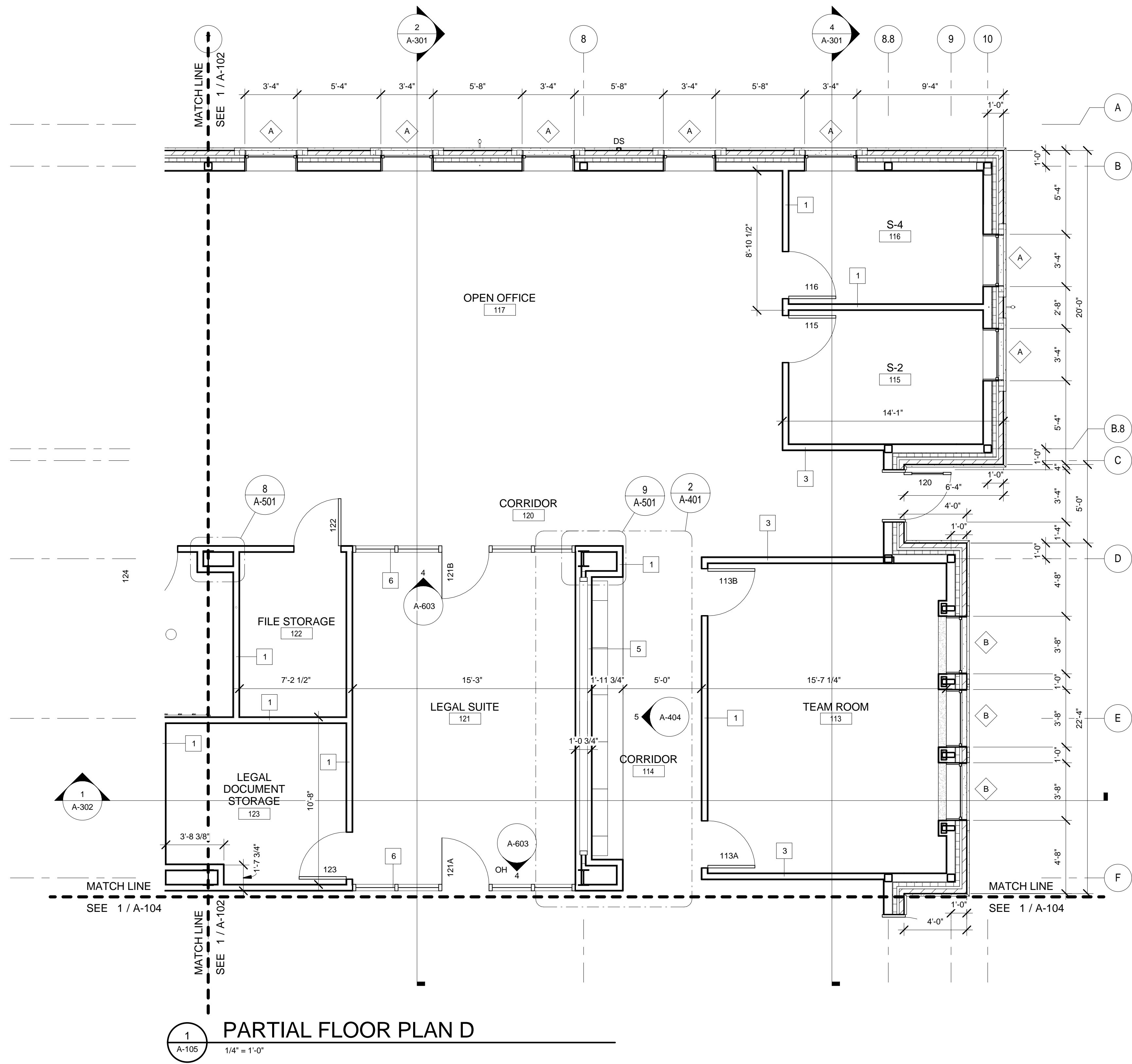
A-101

PARTIAL FLOOR PLAN NOTES:

1. RE: SHEET A-001 FOR FLOOR GENERAL NOTES AND A-101 FOR FLOOR PLAN NOTES.

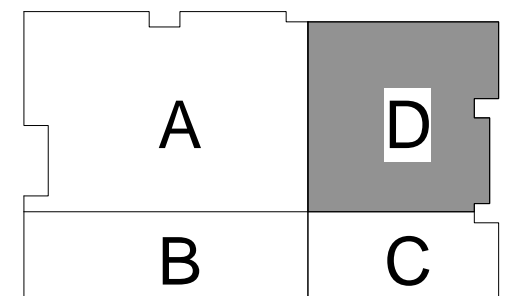
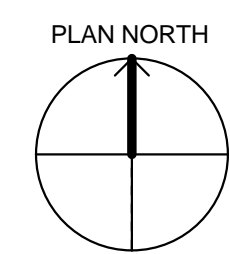


US Army Corps of Engineers
Fort Worth District



PARTIAL FLOOR PLAN D
1/4" = 1'-0"

KEY PLAN D



**CORRECTED FINAL
NOT FOR CONSTRUCTION**

Symbol	Description	Tracking No.	Action	Date

Designed by: S. WEISSENSTEIN / A. ELLIS	Date: 31 December 2013	Rev:
Drawn by: S. WEISSENSTEIN	Scale/Revision No.:	
Reviewed by: 	Contract No.:	
Submitted by: 	File Name: PLOT DATE: 02/15/13 FILE: S02E04A.dwg	

U.S. ARMY ENGINEER DISTRICT,
CORPS OF ENGINEERS
FORT WORTH, TEXAS

ENGINEERING/
CONSTRUCTION DIVISION
ENGINEERING BRANCH

AIT BRIGADE HEADQUARTERS
REGIONAL ENERGY MODEL
REGION 4A

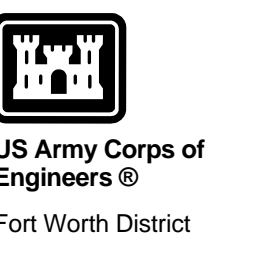
PARTIAL FLOOR PLAN D

SHEET
SEQUENCE
NUMBER

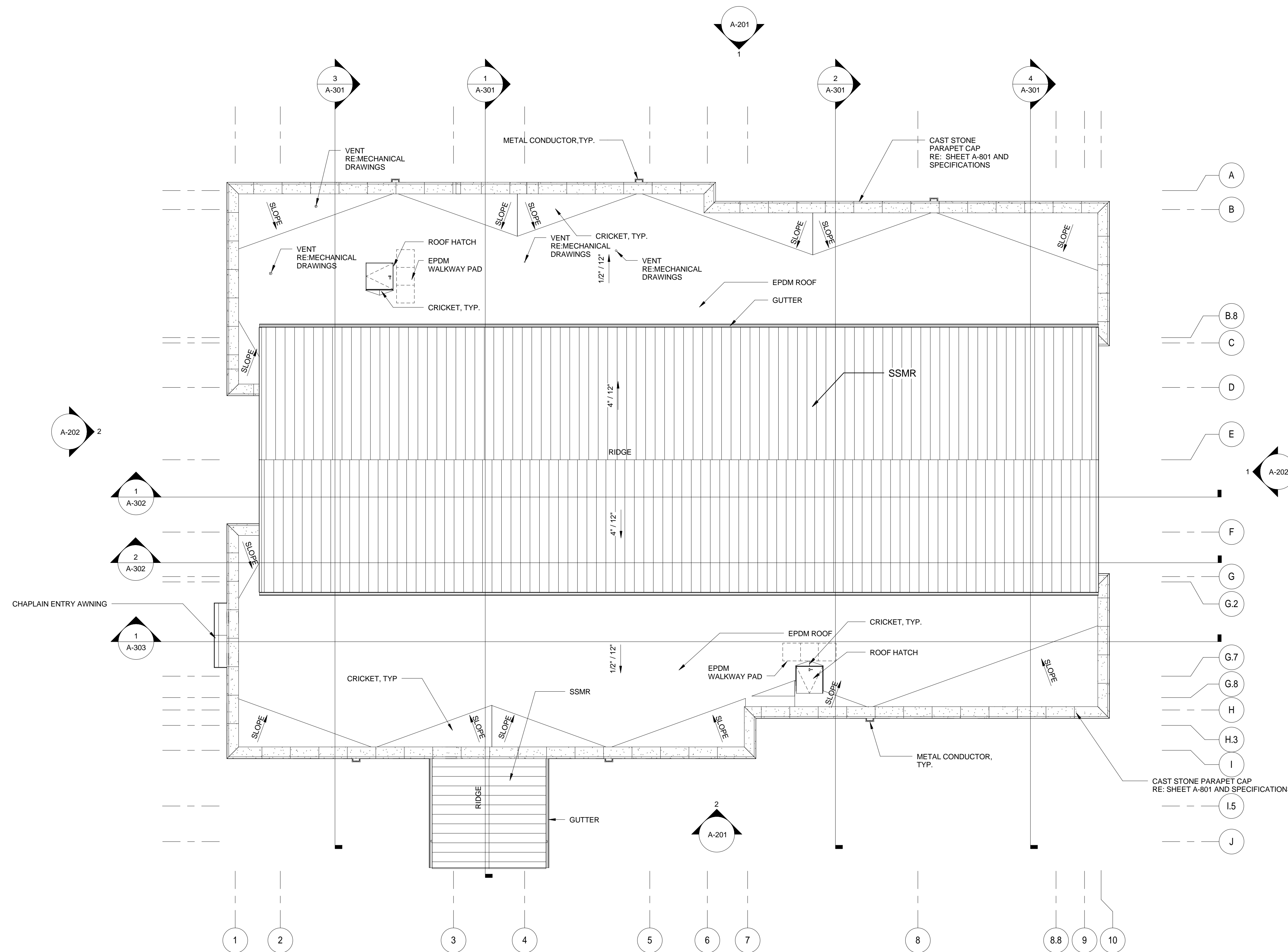
A-105

ROOF PLAN NOTES:

1. RE: SHEET A-001 FOR GENERAL NOTES.
2. ALL ROOF CRICKETS TO BE SLOPED 1/2":12", TYP.
3. RE: CIVIL PLANS FOR DOWNSPOUT CONNECTIONS TO STORM DRAIN.



US Army Corps of Engineers
Fort Worth District



1
A-108
ROOF PLAN
1/8" = 1'-0"

**CORRECTED FINAL
NOT FOR CONSTRUCTION**

Symbol	Description	Tracking No.	Action	Date

Designed by: S. WEISSENSTEIN A. ELLIS	Date: 31 December 2013	Rev:
Drawn by: S. WEISSENSTEIN	Specification No.:	
Reviewed by: 	Contract No.:	
Submitted by: 	File Name: PLOT DATE: 1/8" = 1'-0"	
U.S. ARMY ENGINEER DISTRICT, CORPS OF ENGINEERS FORT WORTH, TEXAS		
ENGINEERING/ CONSTRUCTION DIVISION ENGINEERING BRANCH		

AIT BRIGADE HEADQUARTERS
REGIONAL ENERGY MODEL
REGION 4A
ROOF PLAN

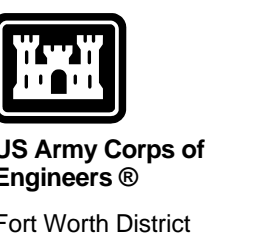
SHEET
SEQUENCE
NUMBER
A-108

EXTERIOR FINISH SCHEDULE

ITEM	DESCRIPTION
SSMR	DARK BRONZE ANODIZED
BRICK	MIDLOTHIAN 4-1111A; LAWRENCEVILLE OR RICHMOND LEE 5-20 BRICK SIZE IS TO BE MODULAR. FLAMINGO-BRIXMENT COLOR MASONRY CEMENT C380 WHITE OAK
MORTAR	AS MANUFACTURED BY ESSROC. ITALCEMENTI GROUP
SPLIT-FACED CMU	YORK BUILDING YBP-631 (BUFF LIMESTONE COLOR)
CAST STONE	COLOR TO MATCH YORK BUILDING YBP-631 (BUFF LIMESTONE COLOR)
ALUMINUM WINDOWS, CURTAIN WALLS, TRANSLUCENT PANEL FRAMES AND METAL WALL PANELS	DARK BRONZE ANODIZED
FACIA, SOFFIT, GUTTER AND DOWNSPOUTS	DARK BRONZE ANODIZED
STEEL DOORS AND FRAMES	DARK BRONZE ANODIZED
MISCELLANEOUS TRIM AND METAL SEALANTS AND CAULKING	MATCH ADJACENT MATERIALS
TRANSLUCENT PANEL	CRYSTAL WHITE

GENERAL NOTES:

1. RE: SHEET A-801 FOR CAST STONE PROFILES.



US Army Corps of Engineers
Fort Worth District

METAL FASCIA
RE: SPECIFICATIONS

SSMR
RE: SPECIFICATIONS

METAL GUTTER
RE: SPECIFICATIONS

METAL FASCIA
RE: SPECIFICATIONS

SOFFIT
19'-8"

CANOPY SOFFIT
10'-0"

TOP OF CAST STONE BAND (UPPER)
9'-4"

TOP OF CAST STONE BAND (LOWER)
4'-0"

CAST STONE MEDALLION
RE: SHEET A-801 AND SPECIFICATIONS

BRICK (MODULAR)
RE: SPECIFICATIONS

SPLIT-FACE CMU
RE: SPECIFICATIONS

CURTAIN WALL SYSTEM
RE: SPECIFICATIONS

BRICK (MODULAR)
RE: SPECIFICATIONS

SPLIT-FACE CMU
RE: SPECIFICATIONS

CURTAIN WALL SYSTEM
RE: SPECIFICATIONS

2 SOUTH ELEVATION
A-201 1/8" = 1'-0"

SSMR
RE: SPECIFICATIONS

METAL GUTTER
RE: SPECIFICATIONS

METAL FASCIA
RE: SPECIFICATIONS

CAST STONE CORNICE
RE: SHEET A-801 AND SPECIFICATIONS

TOP OF CAST STONE BAND (UPPER)
9'-4"

BRICK (MODULAR)
RE: SPECIFICATIONS

CAST STONE SILL
RE: SHEET A-801 AND SPECIFICATIONS

SPLIT-FACE CMU
RE: SPECIFICATIONS

1 NORTH ELEVATION
A-201 1/8" = 1'-0"

OVERFLOW SCUPPER

METAL CONDUCTOR
RE: SPECIFICATIONS

METAL WALL PANEL
RE: SPECIFICATIONS

TRANSLUCENT PANEL
RE: SPECIFICATIONS

CAST STONE CORNICE
RE: SHEET A-801 AND SPECIFICATIONS

CONTROL JOINT, TYP.

CAST STONE BAND
RE: SHEET A-801 AND SPECIFICATIONS

BRICK (MODULAR)
RE: SPECIFICATIONS

CAST STONE SILL
RE: SHEET A-801 AND SPECIFICATIONS

SPLIT-FACE CMU
RE: SPECIFICATIONS

METAL DOWNSPOUT
RE: SPECIFICATIONS

01 FIRST FLOOR
0"

CAST STONE SILL
RE: SHEET A-801 AND SPECIFICATIONS

SPLIT-FACE CMU
RE: SPECIFICATIONS

METAL DOWNSPOUT
RE: SPECIFICATIONS

METAL WALL PANEL
RE: SPECIFICATIONS

TRANSLUCENT PANEL
RE: SPECIFICATIONS

MECHANICAL LOUVER
RE: SPECIFICATIONS

CAST STONE CORNICE AND CAP
RE: SHEET A-801 AND SPECIFICATIONS

CHAPLAIN ENTRY ROOF BEYOND

SOFFIT
19'-8"

TOP OF PARAPET
17'-0"

CANOPY SOFFIT
10'-0"

CAST STONE BAND
RE: SHEET A-801 AND SPECIFICATIONS

FIRE ALARM BELL
RE: ELECTRICAL DRAWINGS

METAL CONDUCTOR
RE: SPECIFICATIONS

OVERFLOW SCUPPER

METAL DOWNSPOUT
RE: SPECIFICATIONS

Symbol	Description	Tracking No.	Action	Date

Designed by: S. WEISSENSTEIN A. ELLIS	Date: 31 December 2013	Rev:
Drawn by: S. WEISSENSTEIN	Specification No.:	
Reviewed by: Checker	Contract No.:	
Submitted by: ARCHITECTURE	File Name: PLOT DATE: 1/8" = 1'-0"	

U.S. ARMY ENGINEER DISTRICT,
CORPS OF ENGINEERS
FORT WORTH, TEXAS

ENGINEERING/
CONSTRUCTION DIVISION
ENGINEERING BRANCH

AIT BRIGADE HEADQUARTERS
REGIONAL ENERGY MODEL
REGION 4A

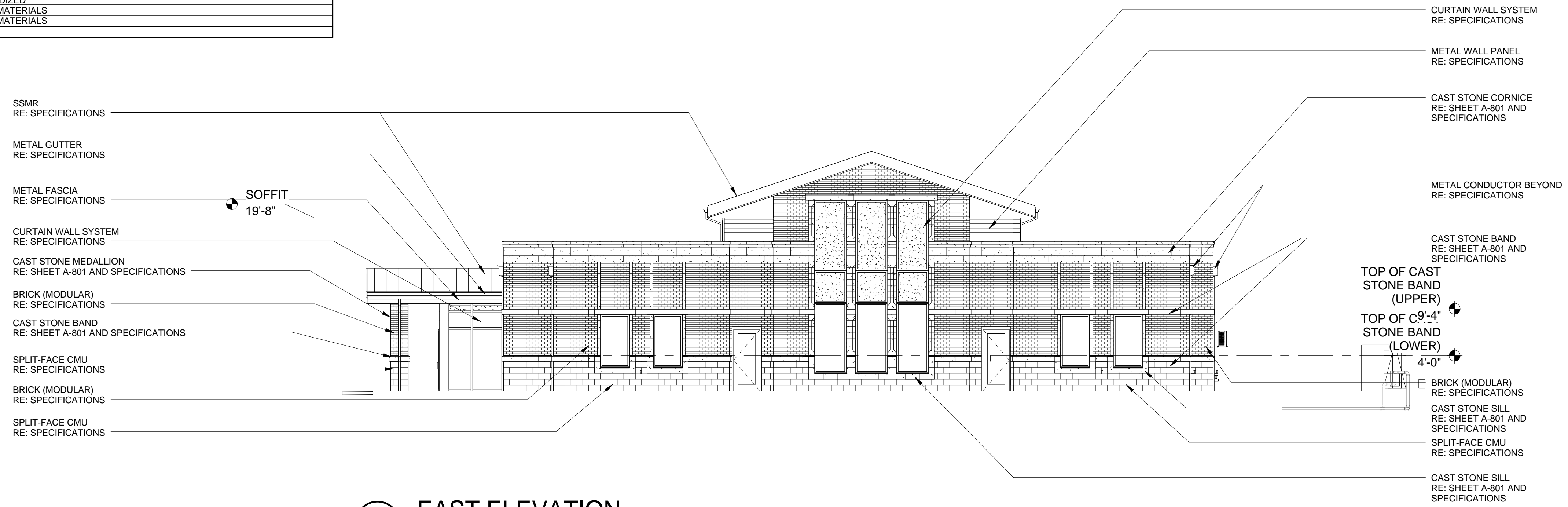
NORTH AND SOUTH ELEVATIONS

SHEET
SEQUENCE
NUMBER
A-201

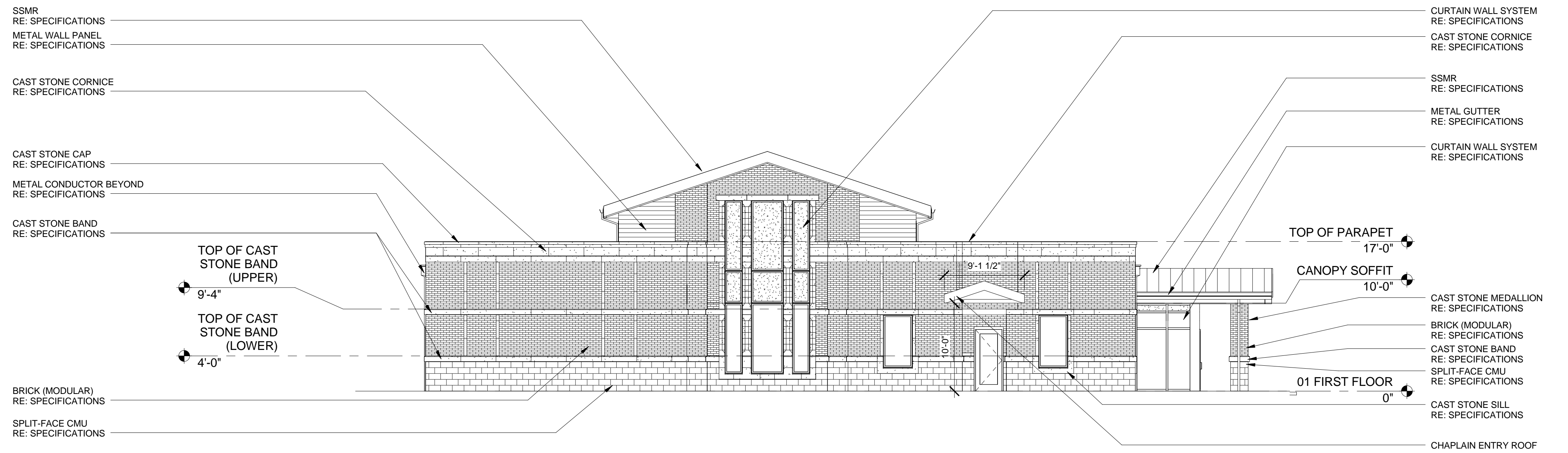
**CORRECTED FINAL
NOT FOR CONSTRUCTION**

EXTERIOR FINISH SCHEDULE

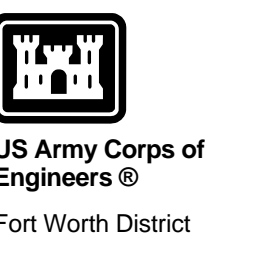
ITEM	DESCRIPTION
SSMR	DARK BRONZE ANODIZED
BRICK	MIDLOTHIAN 4-111A; LAWRENCEVILLE OR RICHMOND LEE 5-20. BRICK SIZE IS TO BE MODULAR.
MORTAR	FLAMINGO-BRIXMENT COLOR MASONRY CEMENT C380 WHITE OAK AS MANUFACTURED BY ESSROC ITALCEMENTI GROUP YORK BUILDING YBP-631 (BUFF LIMESTONE COLOR)
SPLIT-FACE CMU	COLOR TO MATCH YORK BUILDING YBP-631 (BUFF LIMESTONE COLOR)
CAST STONE	DARK BRONZE ANODIZED
ALUMINUM WINDOWS, CURTAIN WALLS, TRANSLUCENT PANEL FRAMES AND METAL WALL PANELS	DARK BRONZE ANODIZED
FACIA, SOFFIT, GUTTER AND DOWNSPOUTS	DARK BRONZE ANODIZED
STEEL DOORS AND FRAMES	DARK BRONZE ANODIZED
MISCELLANEOUS TRIM AND METAL SEALANTS AND CAULKING	MATCH ADJACENT MATERIALS
TRANSLUCENT PANEL	CRYSTAL WHITE



1 EAST ELEVATION
1/8" = 1'-0"



2 WEST ELEVATION
1/8" = 1'-0"



US Army Corps of Engineers
Fort Worth District

Symbol	Description	Tracking No.	Action	Date

Designed by: S. WEISSENSTEIN A. ELLIS	Date: 31 December 2013	Rev:
Drawn by: S. WEISSENSTEIN	Specification No.:	
Reviewed by: 	Contract No.:	
Submitted by: 	File Name: PLOT DATE: 1/8" = 1'-0"	

U.S. ARMY ENGINEER DISTRICT,
CORPS OF ENGINEERS
FORT WORTH, TEXAS

ENGINEERING/
CONSTRUCTION DIVISION
ENGINEERING BRANCH

AIT BRIGADE HEADQUARTERS
REGIONAL ENERGY MODEL
REGION 4A

EAST AND WEST ELEVATIONS

SHEET
SEQUENCE
NUMBER
A-202

**CORRECTED FINAL
NOT FOR CONSTRUCTION**

